



UNIT  
A

Internet 2010

## Microsoft Office 2010- Illustrated

# Getting Started with Internet Explorer 8

# Objectives

- Understand Web browsers
- Explore the browser
- View and navigate Web pages
- Use tabbed browsing

# Objectives

- Save favorite Web pages
- Browse safely
- Search for information
- Get Help and exit Internet Explorer

# Understanding Web Browsers

- The **World Wide Web** (the **Web** or **WWW**) is a part of the Internet containing linked Web pages
- A **Web browser** is a software program used to access and display Web pages
- **Internet Explorer** is a popular Web browser

# Understanding Web Browsers

- A **search engine** is a special Web site that helps find other Web sites
- A **Web site** is a group of Web pages
- Web pages contain highlighted text or graphics called **hyperlinks** or **links**
  - Hyperlinks open other Web pages
  - Example: [www.questspecialtytravel.com](http://www.questspecialtytravel.com)

# Understanding Web Browsers

## Using Internet Explorer, you can:

- Display Web sites
- Play audio and video clips
- Search the Web for information and save a list of favorite web pages
- Save, share, e-mail, or print Web page text and graphics

# Understanding Web Browsers

- A **computer network**
  - Two or more connected computers that can share information
- The **Internet** is a network of connected computers and computer networks located around the world.
  - Over 600 million computers connected throughout the world
  - Connected using telephone lines, cables, satellites, and other telecommunications multimedia

# Understanding Web Browsers



A sample web page

Microsoft Office 2010-Illustrated



# Exploring the Browser

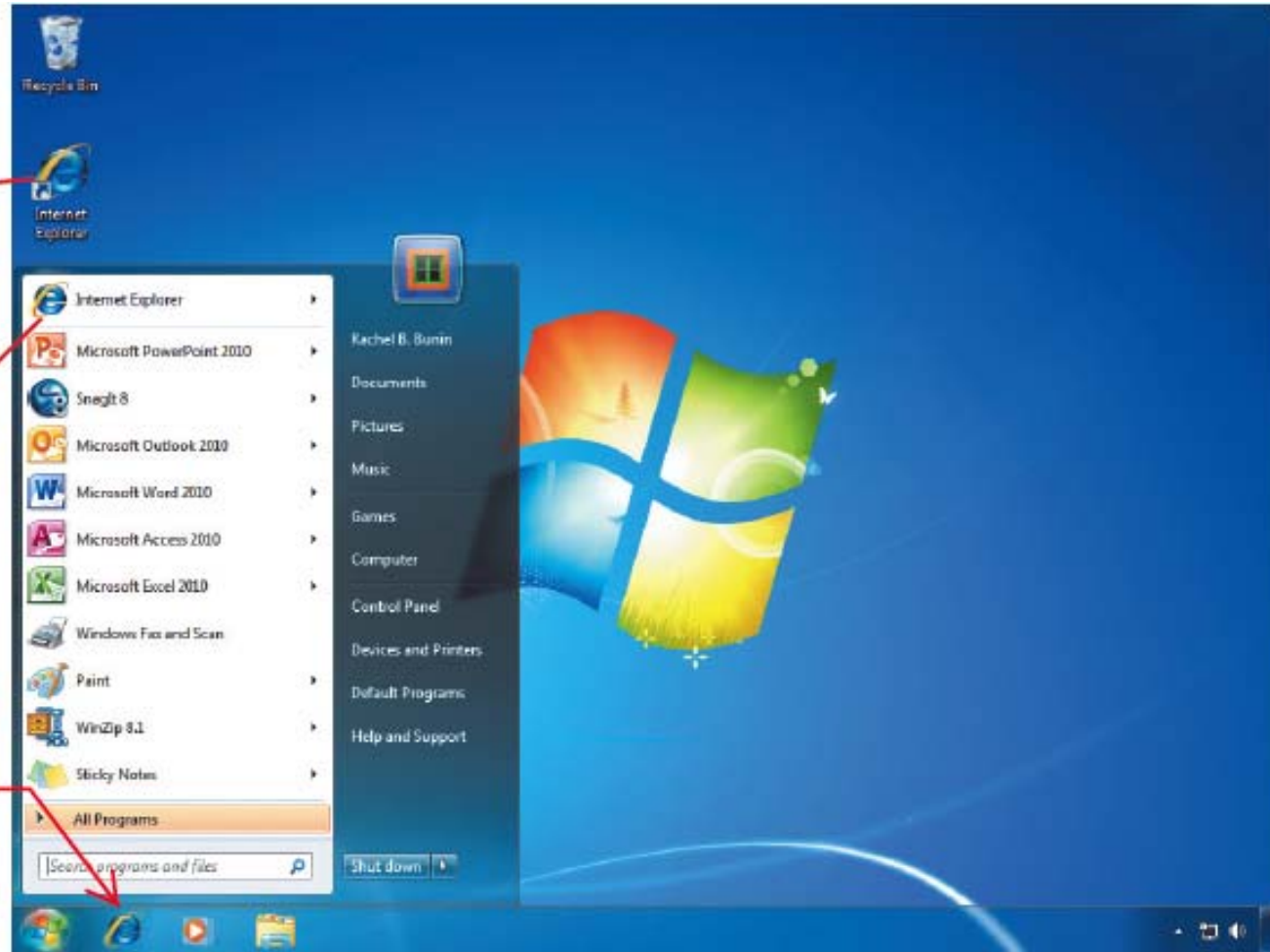
- Internet Explorer connects your computer to the Web using an Internet connection
- Locate the Internet Explorer icon
  - Start menu or desktop icon
- Home page appears
  - A **home page** is the first page that opens every time you start Internet Explorer

# Exploring the Browser

Internet Explorer icon on desktop

Internet Explorer icon pinned to start menu

Internet Explorer icon on taskbar



Starting Internet Explorer 8

# Exploring the Browser

UNIT  
**A**

Internet

Forward

Back

Menu bar

Favorites  
opens  
Favorites  
Center

URL

Favorites  
bar

Title bar

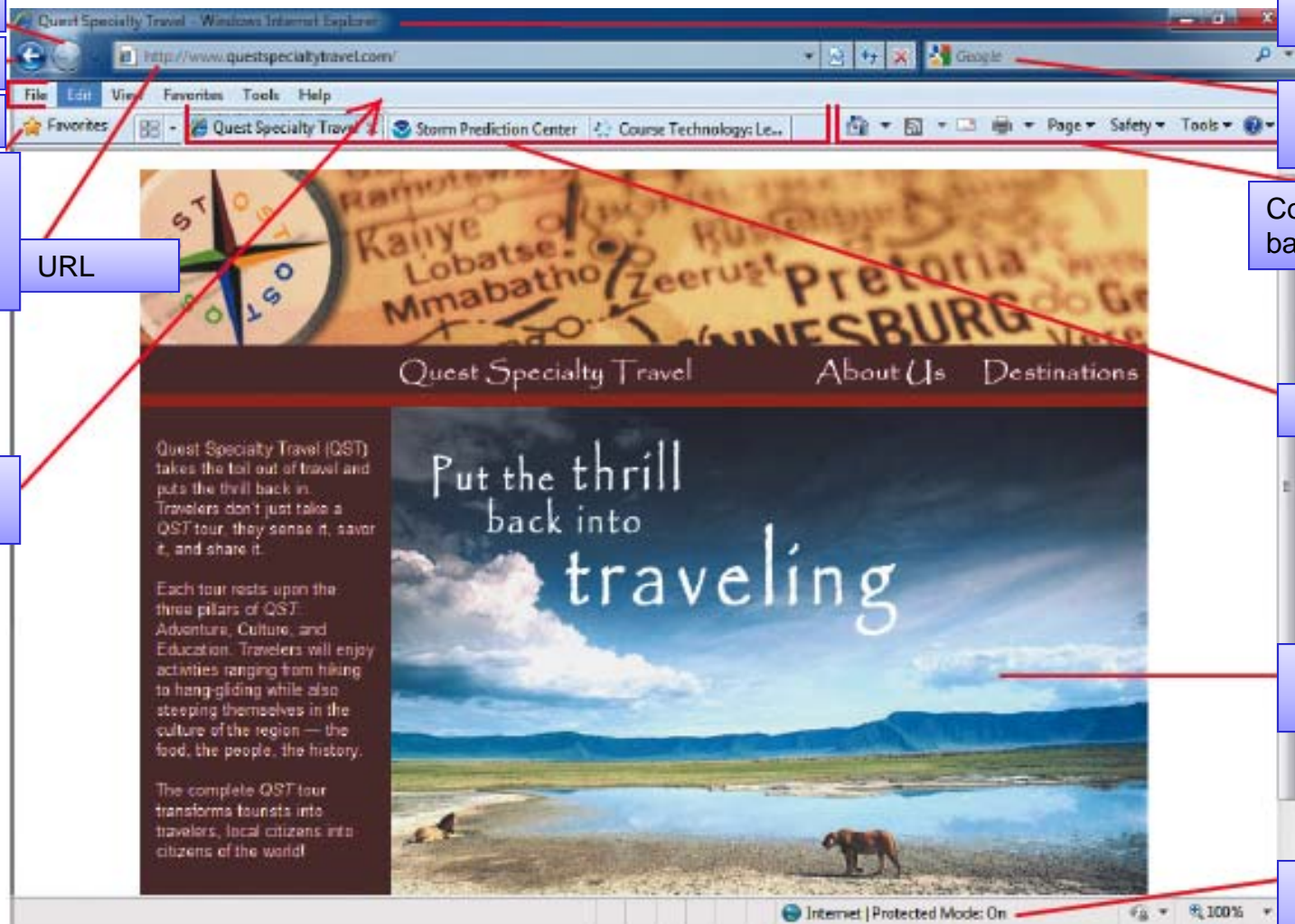
Search  
box

Command  
bar

Tabs

Browser  
window

Status  
bar



Elements of the Internet Explorer window

Microsoft Office 2010-Illustrated

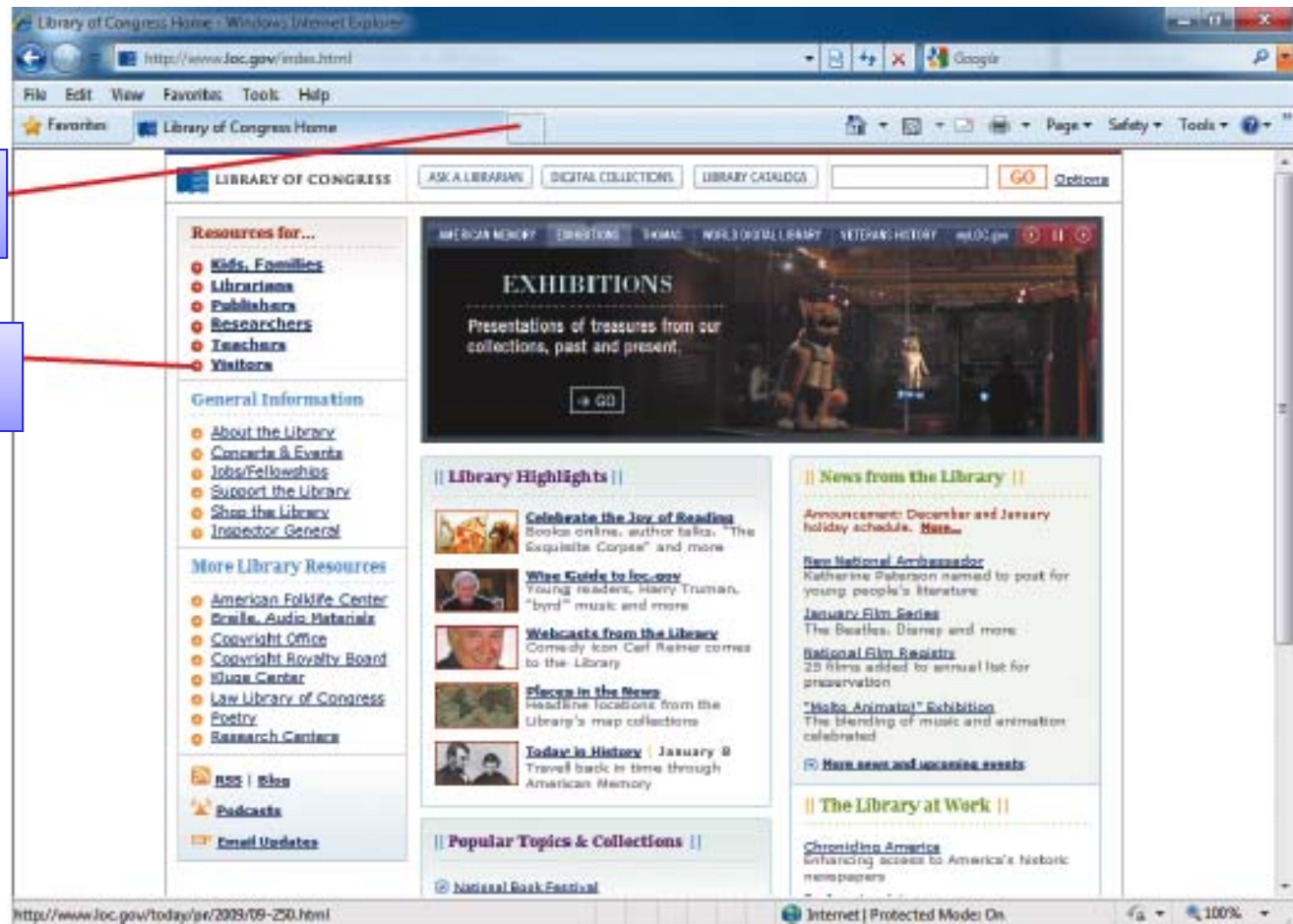
# Viewing and Navigating Web Pages

- Every Web page has a **URL**
  - unique address on the Web
- Parts of a URL:
  - “http” (Hypertext Transfer Protocol)
  - “:” (a colon)
  - “//” (two forward slashes)
  - “www” (identifies the World Wide Web)
  - then the **domain name**: the Web site’s name
  - “.” (another dot)
  - top-level domain
    - edu, com, gov, or org

# Viewing and Navigating Web Pages

New Tab tab

Visitors link



Home page for the Library of Congress

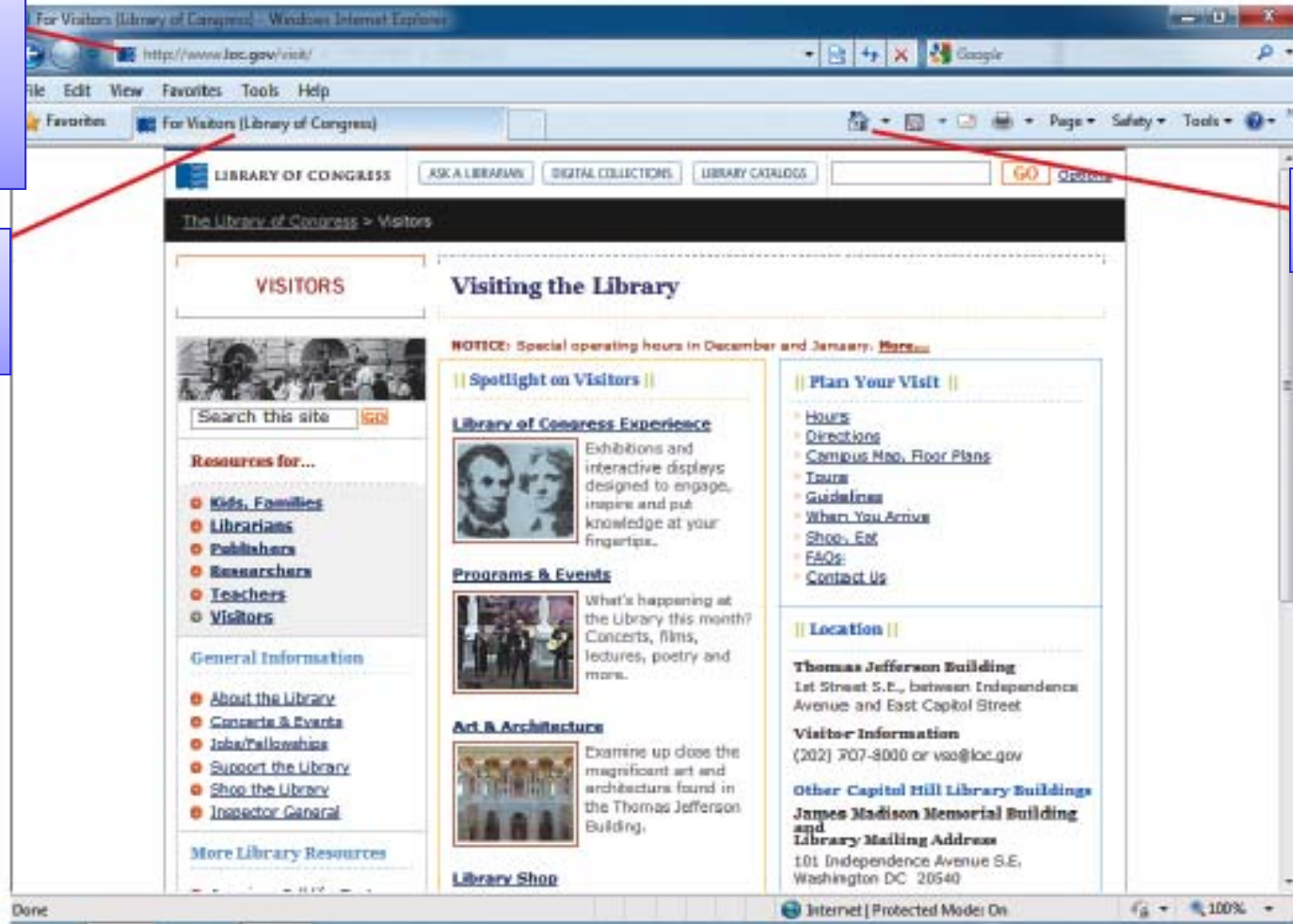
Microsoft Office 2010-Illustrated

# Viewing and Navigating Web Pages

Web page icon in address bar

Page name on the tab

Home button

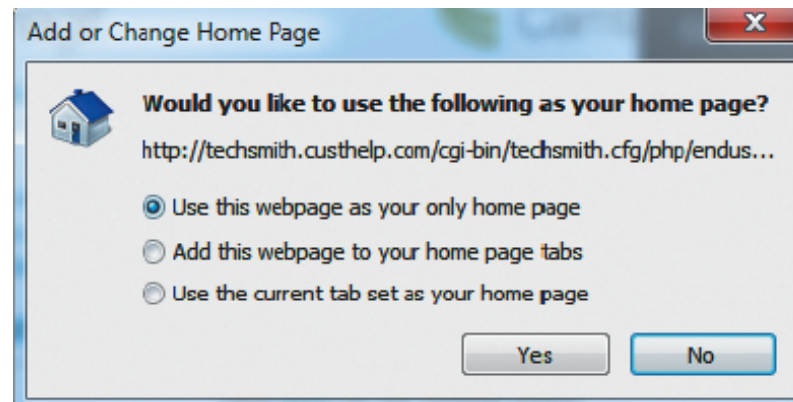


Visitors Web page at the Library of Congress Web site

Microsoft Office 2010-Illustrated

# Viewing and Navigating Web Pages

- **Setting a home page**
  - Open the Web page you want to be your new home page
  - Click the option in the Add or Change Home Page dialog box.



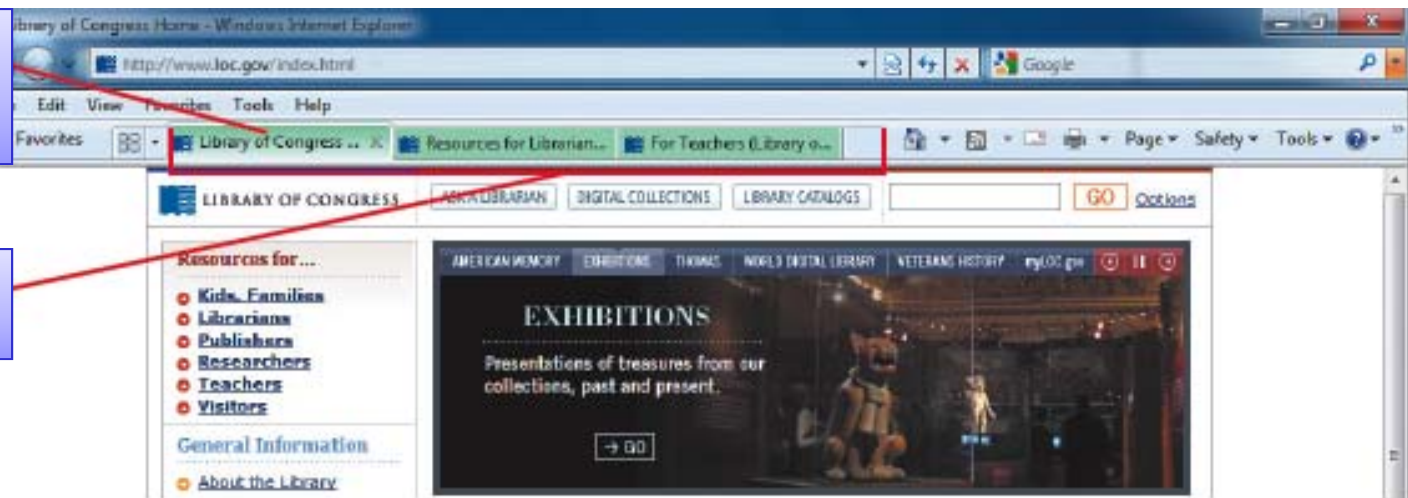
**Add or Change Home Page dialog box**

# Using Tabbed Browsing

- You can open several Internet Web page windows at the same time
- Each Web page accessible by clicking the tab

Active tab  
in  
foreground

Tab group  
color coded



Tabbed browsing

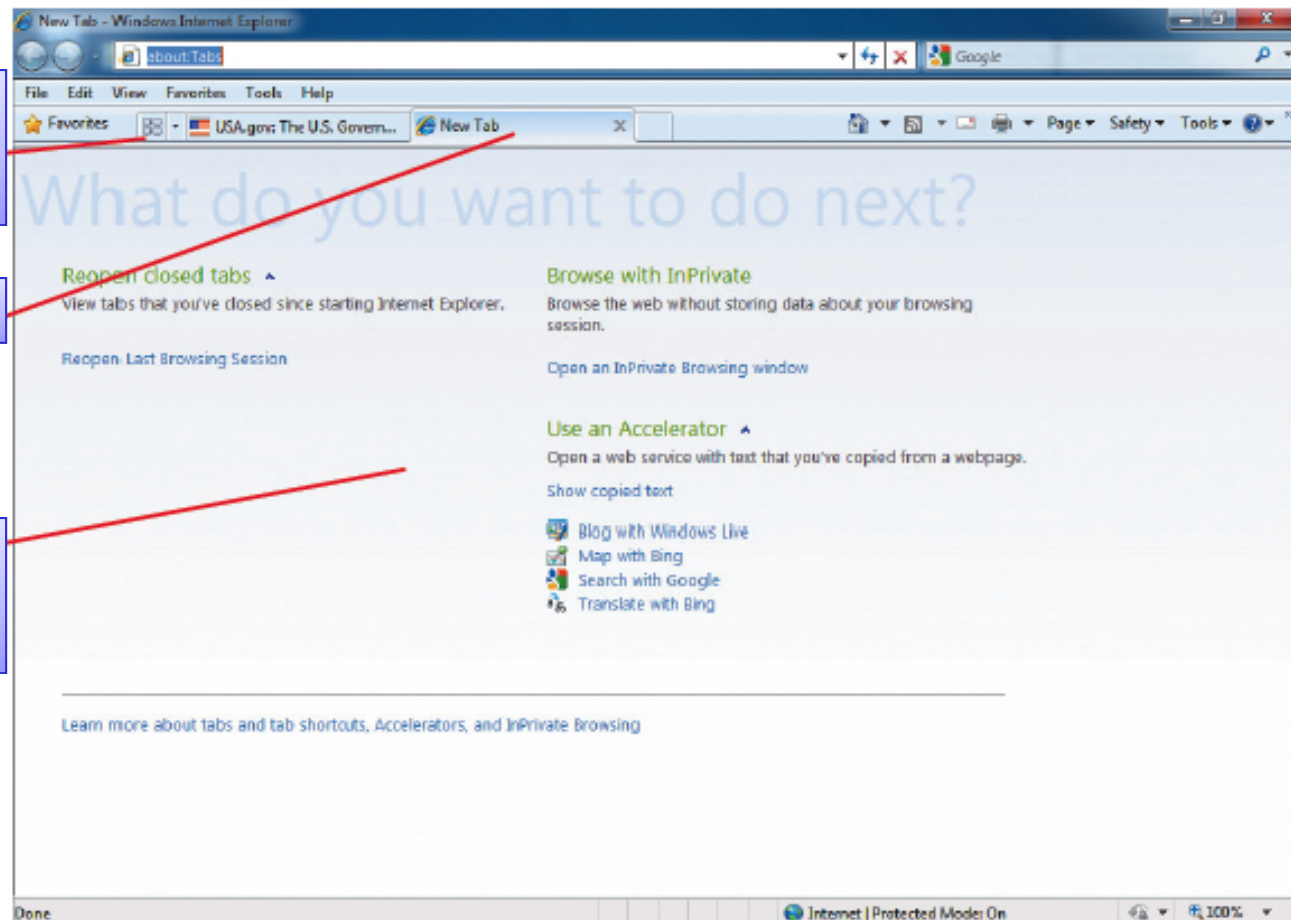


# Using Tabbed Browsing

Quick  
Tabs  
button

New tab

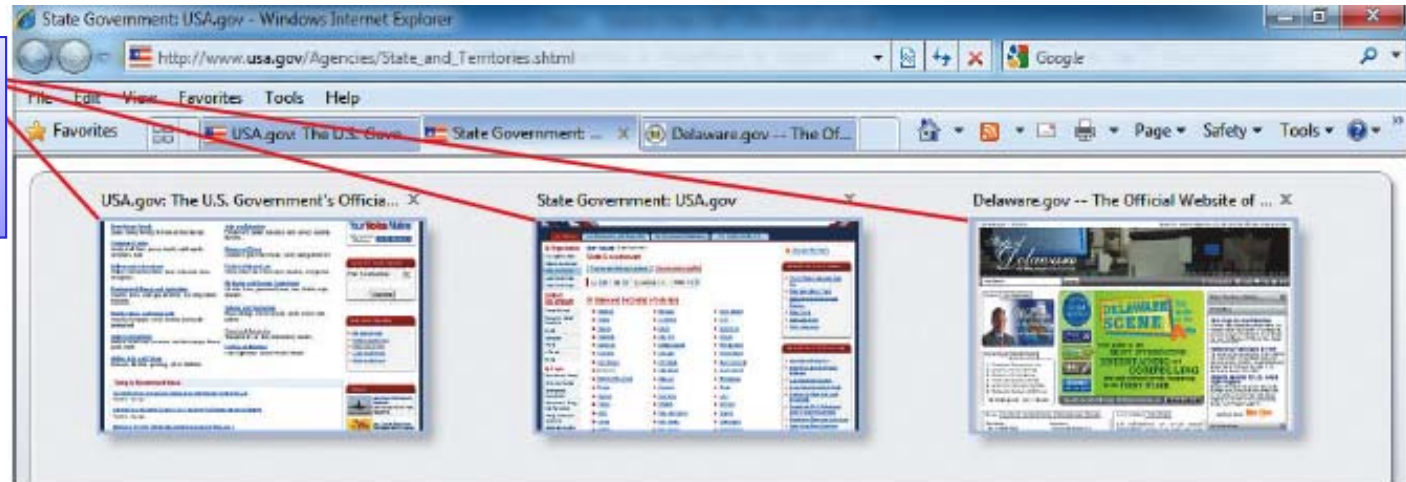
Your page  
might  
differ



The about:Tabs Web page in a second tab

# Using Tabbed Browsing

Three  
open Web  
page  
thumbnails

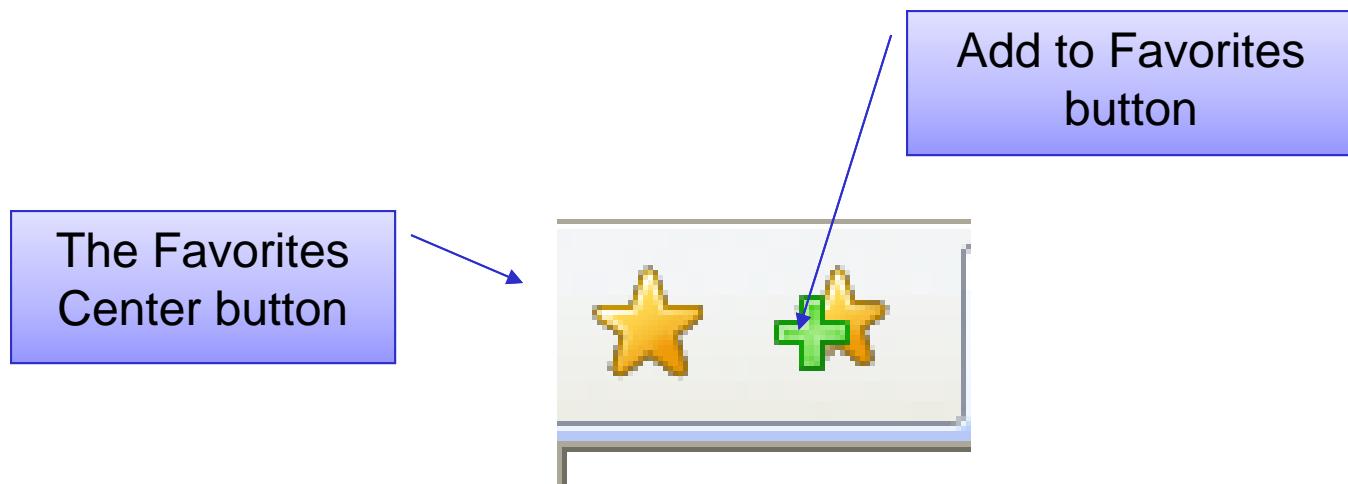


Quick Tabs view

- **To close several open pages**
  - Click File on the menu bar and click exit, or click the Close button on the title bar
  - A dialog box will open and ask if you want to close all tabs or just current tab

# Saving Favorite Web Pages

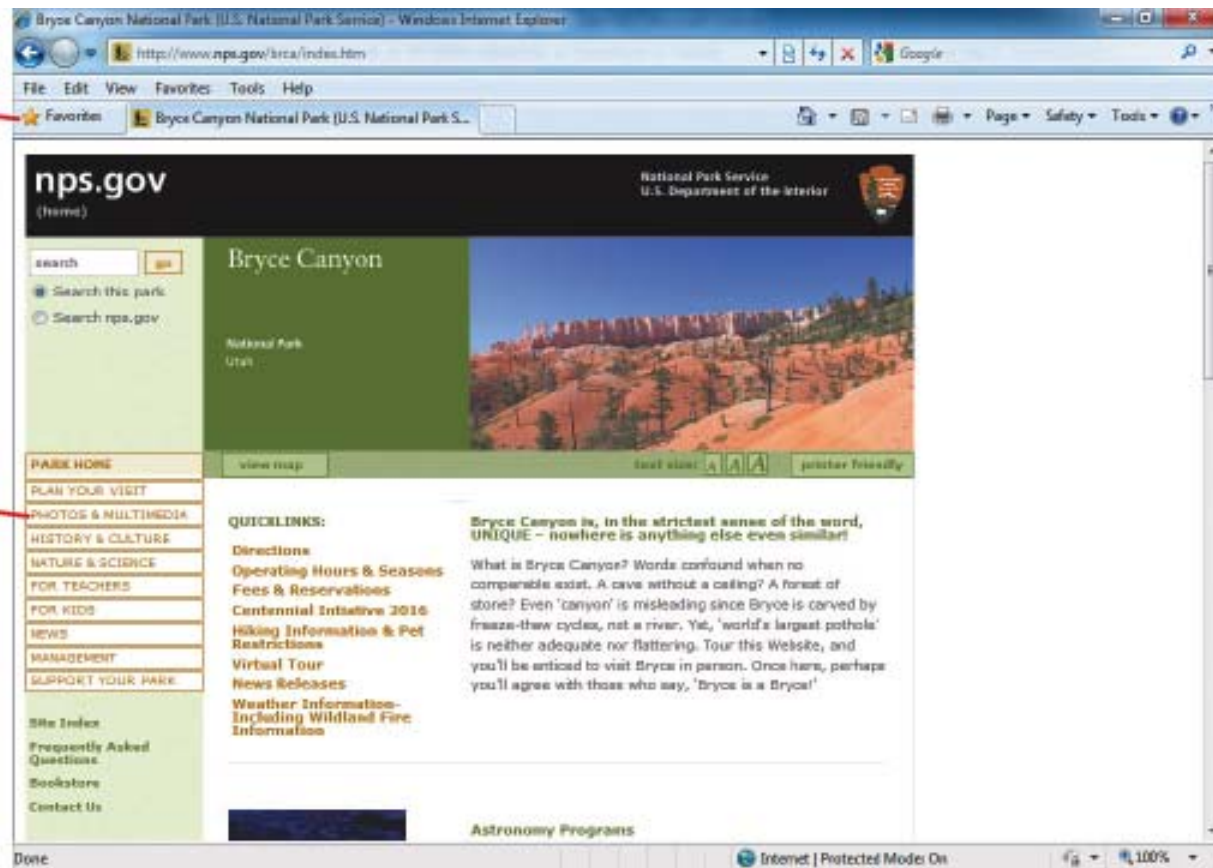
- Use the **Favorites list** and the **Favorites Center** to create your own list of favorite Web sites



# Saving Favorite Web Pages

Favorites  
button

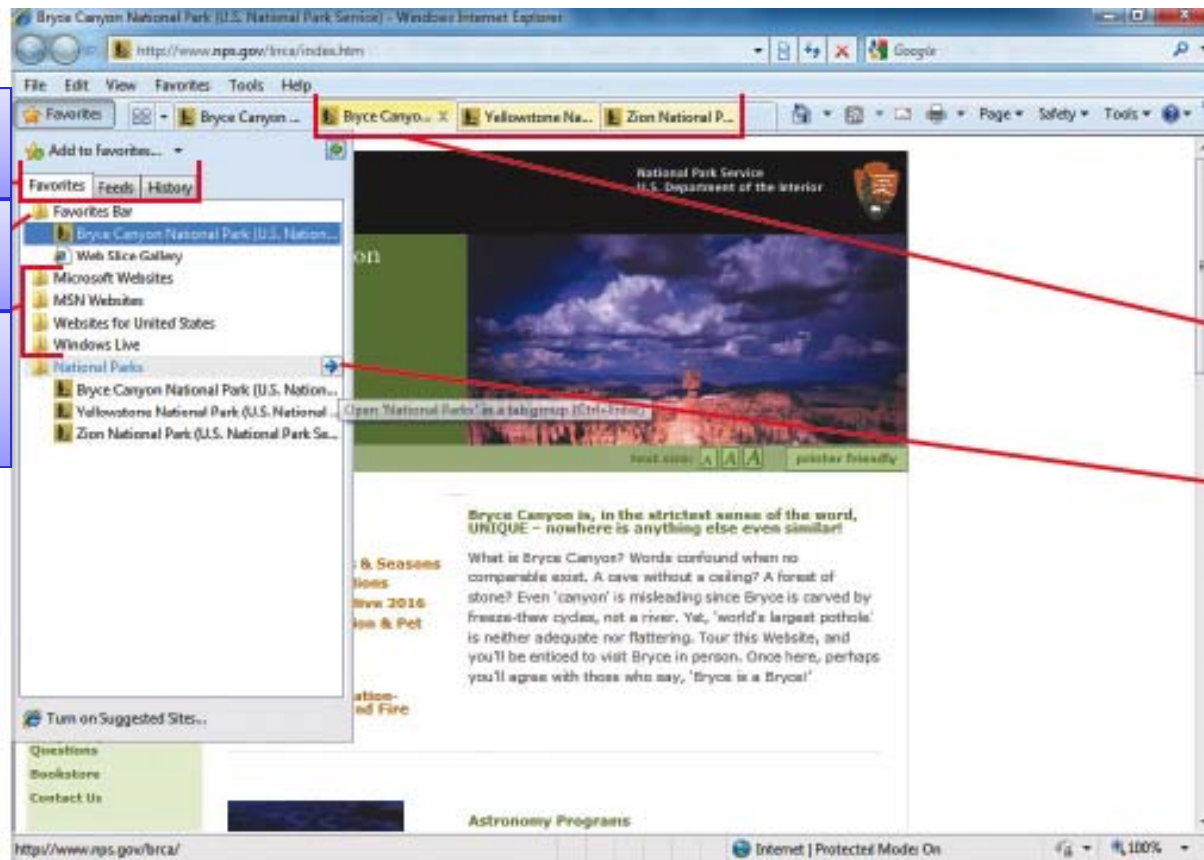
PHOTOS &  
MULTIMEDIA  
link



Home page for Bryce Canyon National Park

Microsoft Office 2010-Illustrated

# Saving Favorite Web Pages



Favorites Center

Favorites Bar folder

Default favorites folder

Favorites opened in tab group

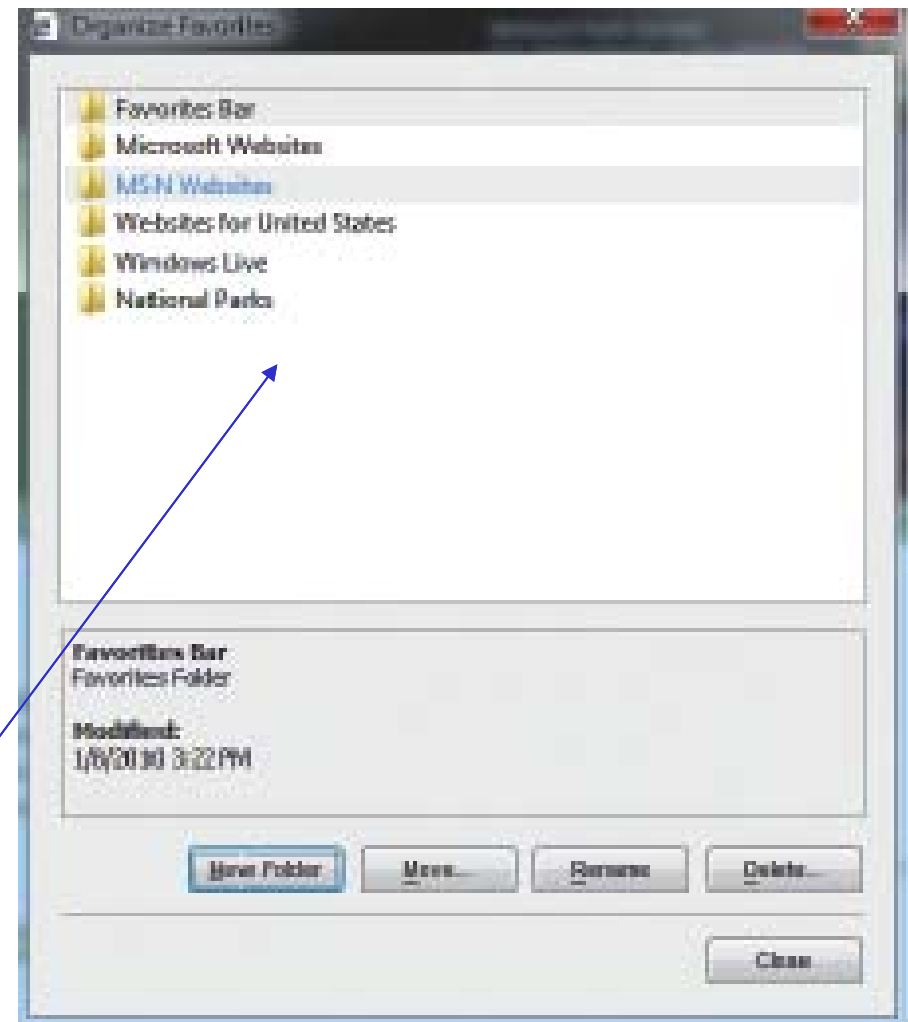
Click to open tab group and ScreenTip

Favorites Center

# Saving Favorite Web Pages

- Use the Organize Favorites dialog box to manage the Favorites list

List of favorites



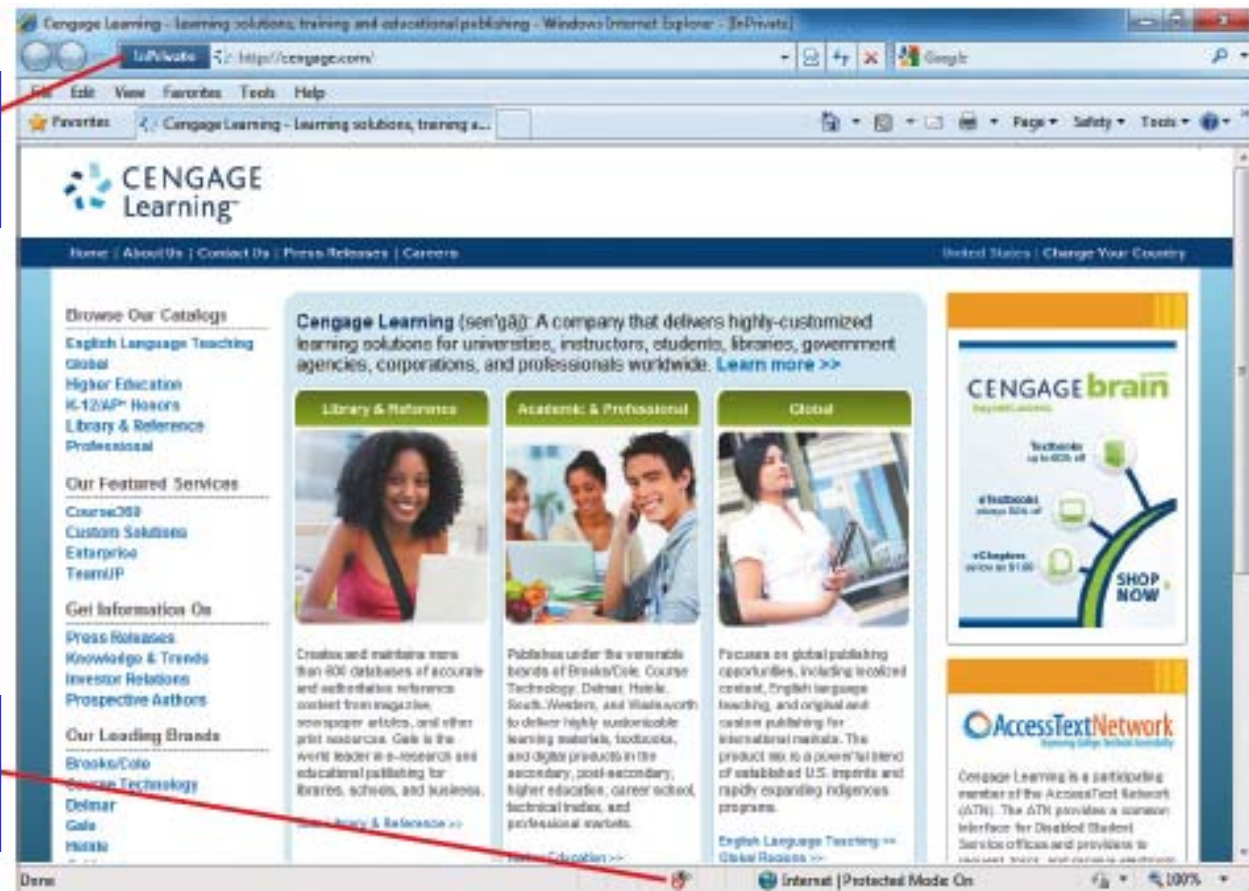
# Browsing Safely

- Risks of Browsing
  - Privacy at risk
  - Computer could become infected with a virus
  - Identity theft
    - **InPrivate Browsing:** view Web sites without browser saving personal information
    - **InPrivate Filtering:** prevents Web site or third-party developers from collecting information about sites you visit
    - **Digital Certificate:** verifies the identity of a person or indicates the security of a Web site

# Browsing Safely

Icon in  
Address  
bar

Icon on  
Status  
bar



InPrivate Browsing

Microsoft Office 2010-Illustrated



# Browsing Safely

http://

Address bar is bluish-gray

Click to sign in

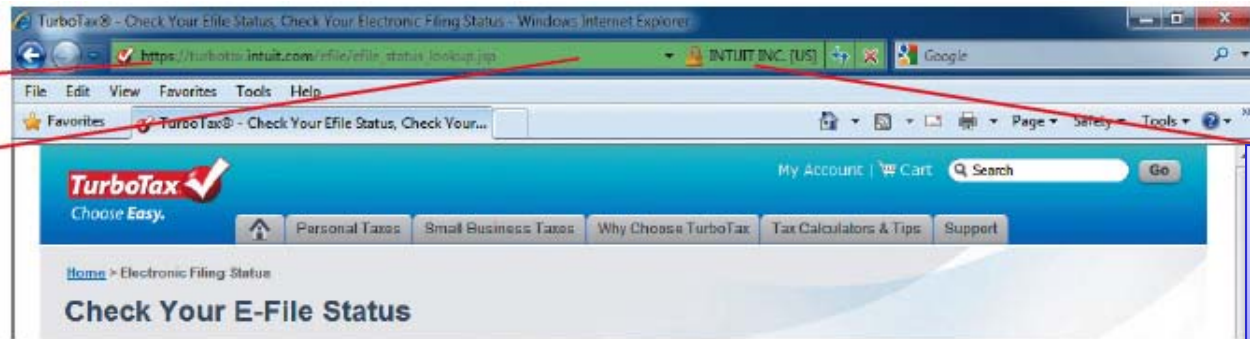


TurboTax Web site

Microsoft Office 2010-Illustrated

# Browsing Safely

https://  
Address and Security Status bar is green



Icon and certificate verified in Security Status bar

Secure Web site

# Browsing Safely

- **Phishing** is an illicit activity where people send you fraudulent Web sites to gather your personal information for possible illegal purposes.
- **SmartScreen Filter** is a feature in Internet Explorer 8 that helps detect phishing Web sites.

# Searching For Information

Search options:

- Enter **keywords** in the **Search bar**
- Enter **keywords** in the **Search box**
- Use **search engines**
  - Bing
  - MSN Search
  - Google
  - Yahoo! Search

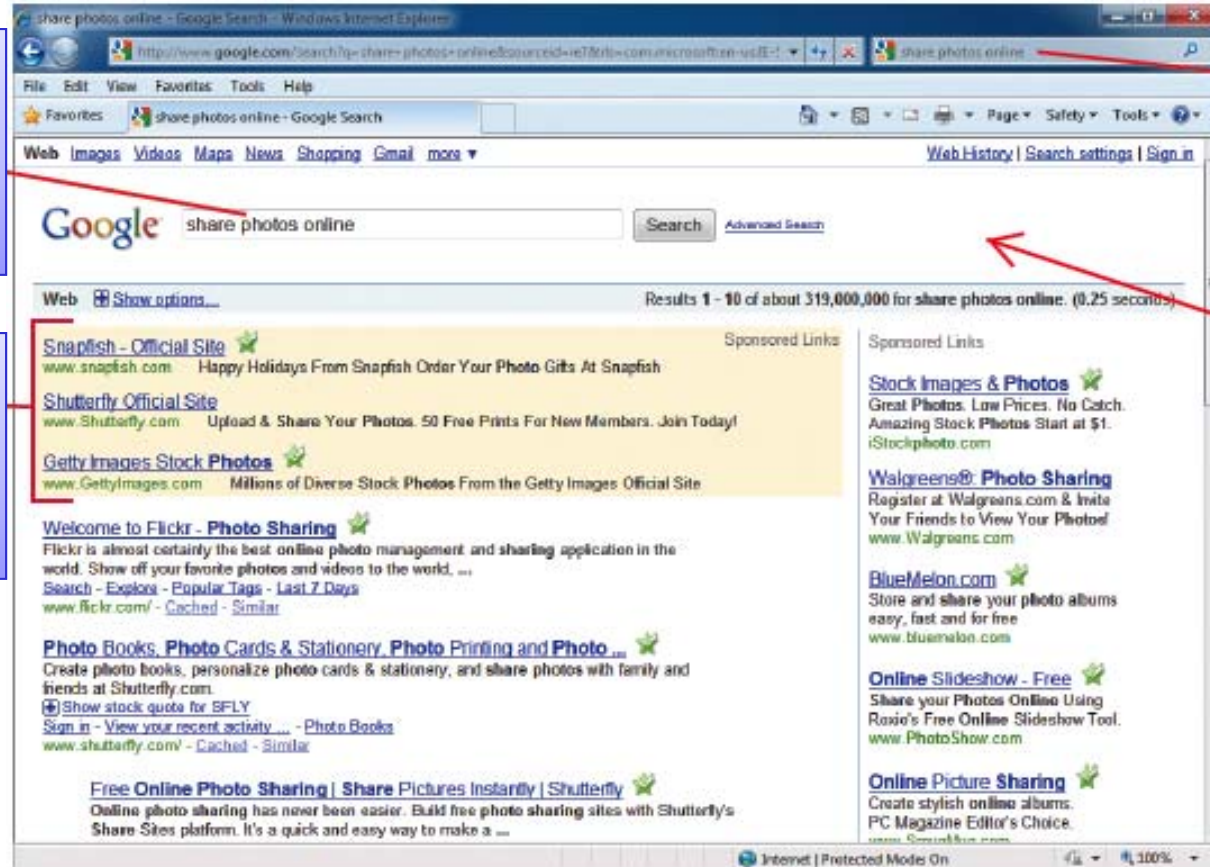
# Searching For Information

Search terms used to find results

Results include sponsored (commercial) links

Search box

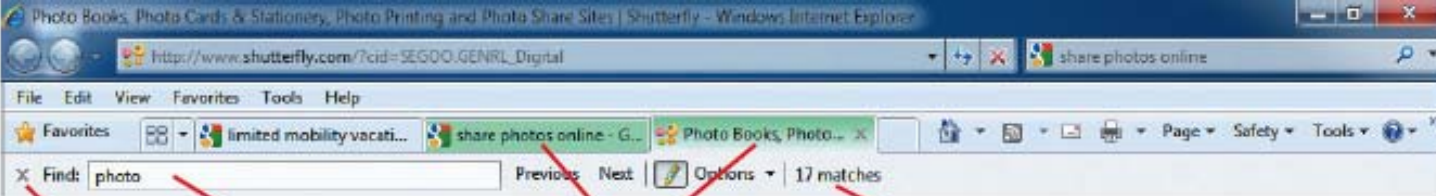
Your search page may be different



Search results

# Searching For Information

## Finding text on a page



Click to close Find box

Find box with search term 'photo'

Color coded 'Tab' group

17 matches found

## Blocking pop-ups:

- **Pop-ups** are windows that open on your screen as you visit Web sites, generally to advertise products that you might or might not want
- Internet Explorer comes with a built-in Pop-up Blocker
- Pop-up Blocker can be turned on or off

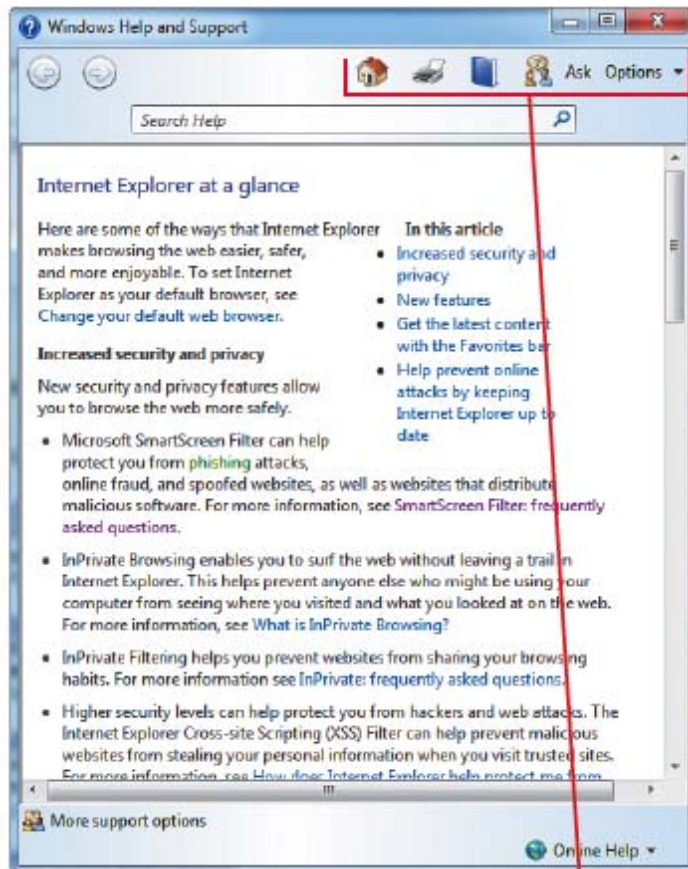
# Getting Help and Exiting Internet Explorer

- **Getting Help**
  - Internet Explorer provides a **Help** system with information and instructions on various features and commands
  - Internet Explorer **Accelerator** button links to services related to text you highlight in a page



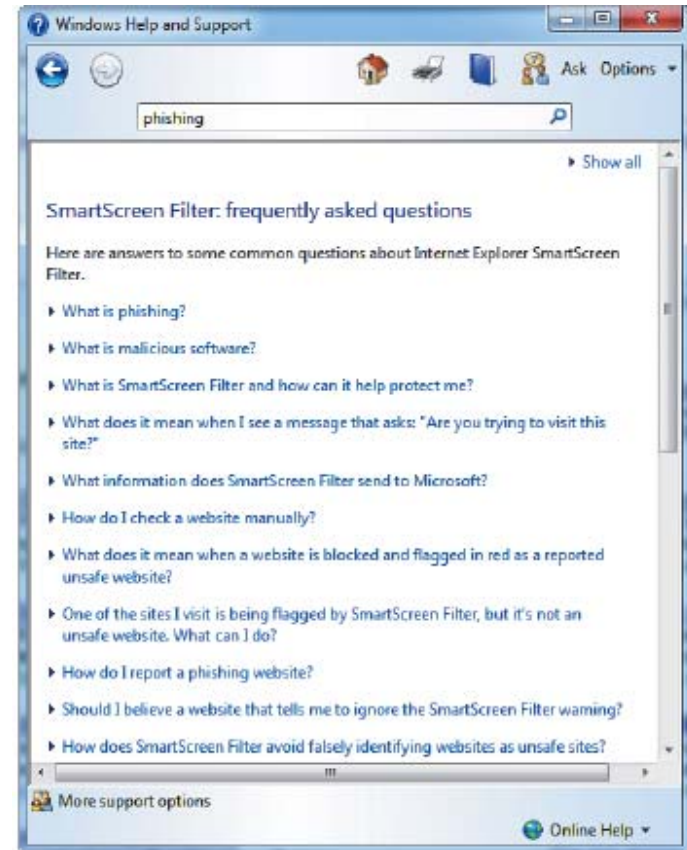
Accelerator icon

# Getting Help and Exiting Internet Explorer



Windows Help and Support

Help window buttons



SmartScreen Filter FAQs



# Getting Help and Exiting Internet Explorer

- **To Exit Internet Explorer:**
  - Click the Close button on the Title bar  
OR
  - Click File on the menu bar, then click Exit
  - Close all open tabs or close each tab separately
  - If more than one tab is open, you will be prompted to close all tabs or cancel
  - You do NOT need to save files